

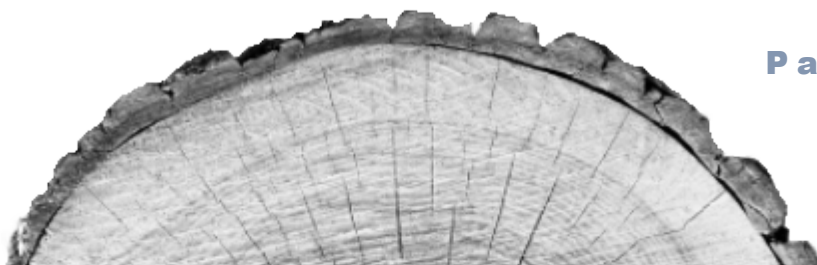


CABINETS CATALOG



DDN
INTERIOR SUPPLY INC

- 3** [How To Order](#)
- 4** [Cabinet Care](#)
- 5** [Terms and Conditions](#)
- 5** [Warranty Information](#)
- 6** [Cabinet Lines](#)
- 7** [Cabinet Details](#)
- 9** [Detailed Drawings: Accessories](#)
- 11** [Detailed Drawings: Wall Cabinets](#)
- 17** [Detailed Drawings: Base Cabinets](#)
- 20** [Detailed Drawings: Wall Pantry Cabinets](#)
- 21** [Detailed Drawings: Vanity Cabinets](#)
- 35** [Order Form](#)



Order Placement

Please use our forms or contact our office to receive a copy of the order form.

Orders must be submitted with:

- Dealership Name
- Client Name
- Purchase Order Number, if applicable

Order Confirmation

Order will be created and sent for your review in a timely manner.

Final cabinet order will be approved and signed for by customer prior to pick up or delivery.

Revisions made to order after confirmation may be subject to fees.

No returns on custom made cabinets.

Lead Time

Once the confirmed order has been received, please allow 3-5 business days for the cabinets to be built.

Modifications

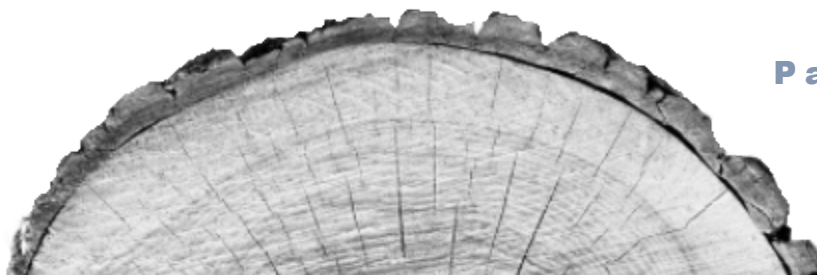
Fees vary and are subject to change depending on the modification of cabinets. No returns are accepted on modified cabinets.

Delivery

Please call our office to schedule or obtain delivery options and fees.

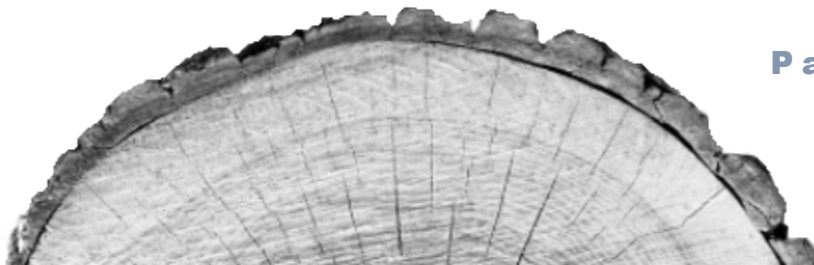
Pick Up

Orders must be paid for in full prior to pick up or will call.



Please take the following into consideration before cleaning your DDN Cabinets:

- ✓ Clean your cabinets with a damp cloth to remove dust and debris, then dry with a clean cloth afterwards to enhance the shine and beauty of the natural wood.
- ✓ Never use cloths or sponges that have grease or grime on them, as this could transfer to the cabinets and affect their appearance.
- ✓ To remove grime and grease from your cabinets, use dish soap and water on a clean cloth and wipe away, then dry with a clean cloth.
- ✓ Immediately dry your cabinets if water or liquids spill onto them, hard water deposits can stay behind or even worse, the cabinets could swell if left to sit in standing water.
- ✓ Cabinet scratches can usually be touched up with a marker or wax pen.
- ✓ If scratches or dents are still visible, try using wood filler or a filler pencil. Simply rub the pencil over the affected area, allowing it to completely cover the area, then wipe away the excess with a clean cloth. To secure your wood filler, apply a clean protective coating of 'Clear Fast Dry Touch Up', available at your local hardware store in the paint section.
- ✗ Never use bleach, ammonia, or other strong detergents to clean your cabinets.
- ✗ Never use abrasive cleaners or scrub pads to clean your cabinets as this could remove the finish and stain.
- ✗ Never use sandpaper to even out a scratch or dent as this can affect the finish and stain of the cabinets.



Terms and Conditions

- **Payments**
 - DDN accepts Check, Cash and Credit Card payment (cards are subject to a 5% usage fee).
- **Discounts and Promotions**
 - Please see your sales representative for details on discounts and promotions.
- **Taxes and Reseller Permits**
 - DDN requires a Reseller's Permit if you are Non-Taxable, prior to pick up or payment.
- **Late Fees**
 - Past Due Invoices are subject to a 12% interest rate per Quarter.

Warranty

DDN offers a 1 – Year Workmanship Warranty on all products. Cabinets installed by Non-DDN installers still fall under the Workmanship Warranty on the build and structural integrity of the cabinets.

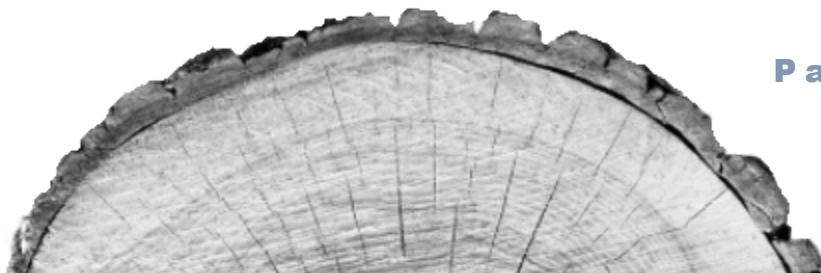
This Warranty will not cover products that are mis-used, abused, mishandled, improperly stored, have been affected by acts of God, or the effects of normal wear-and-tear.

Natural wood varies in color and exhibits changes over time as it ages. Cabinet color can be affected by sunlight, heat, smoke, household cleaners and other environmental conditions. These variations are considered the natural characteristics of the materials and are not covered under the warranty.

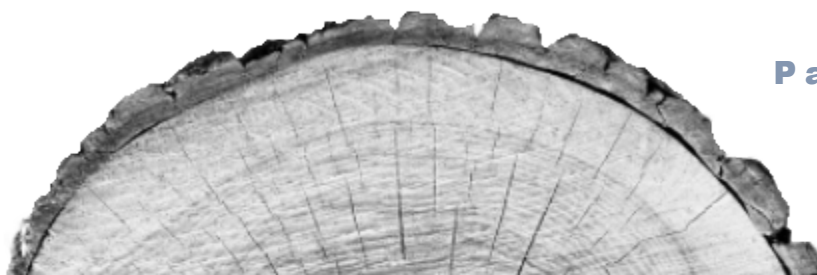
Honey Pecan

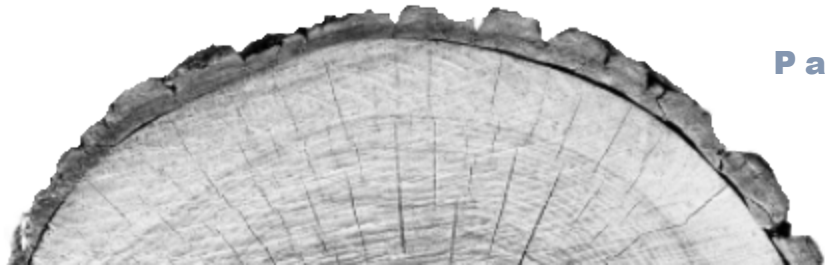


White



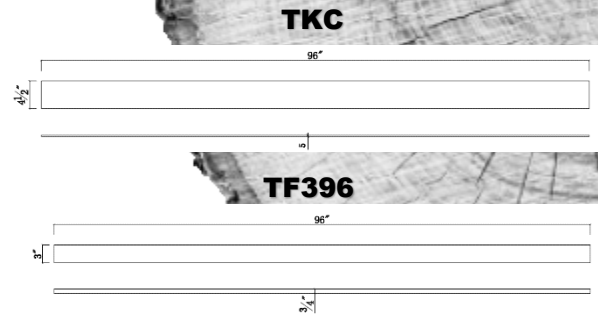
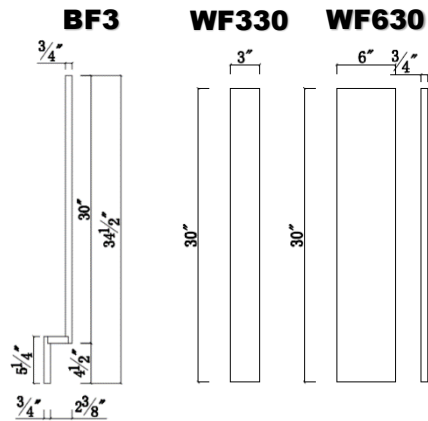
	White Shaker	Honey Pecan Shaker
Door Material	Premium HDF	Maple Hardwood
Style	Full Overlay, Butt Door	Full Overlay, Butt Door
Door Style	Shaker, Recessed Square	Shaker, Recessed Square
Face Frame	¾" Solid Maple	¾" Solid Maple
Door Frame	¾" Premium HDF	¾" Solid Maple
Door Center	Premium HDF	Maple Hardwood
Cabinet Sides	5/8" Grade-A Plywood with Wood Veneer	5/8" Grade-A Plywood with Wood Veneer
Cabinet Top & Bottom	5/8" Grade-A Plywood with Wood Veneer	5/8" Grade-A Plywood with Wood Veneer
Interior Finish	Same as Door Color	Same as Door Color
Back Panel	5/8" Picture Frame	5/8" Picture Frame
Hinges	Concealed, 6-Way Adjustable, Soft Close Hinges	Concealed, 6-Way Adjustable, Soft Close Hinges
Connectors	Metal Clips and Pocket Screws	Metal Clips and Pocket Screws
Shelves	¾" Grade-A Plywood with Wood Veneer	¾" Grade-A Plywood with Wood Veneer
Drawer Box	5/8" Solid Maple Wood, Dovetail Construction	5/8" Solid Maple Wood, Dovetail Construction
Drawer Length	21"	21"
Drawer Box Finish	Natural Wood Finish	Natural Wood Finish
Drawer Glides	Undermount, Full Extension, Soft Close	Undermount, Full Extension, Soft Close
Corner Supports	Solid Wood Bracket with I-Beam Construction	Solid Wood Bracket with I-Beam Construction



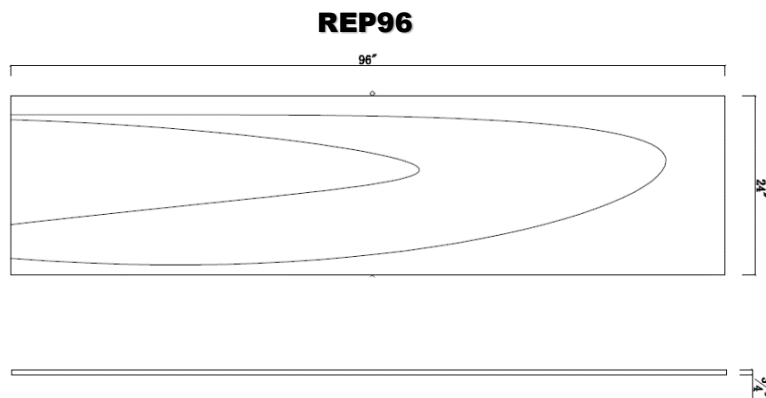
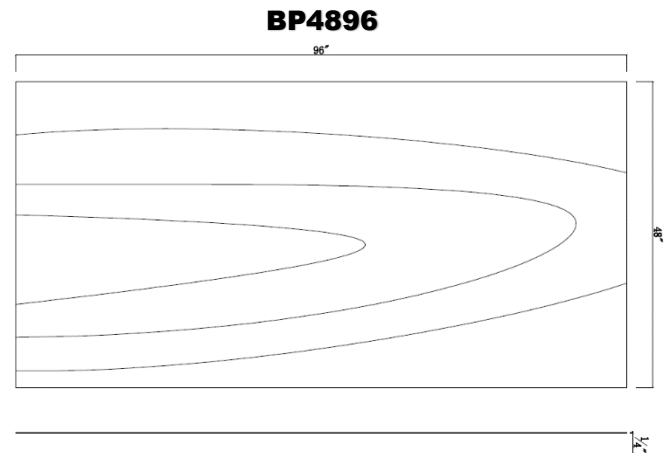
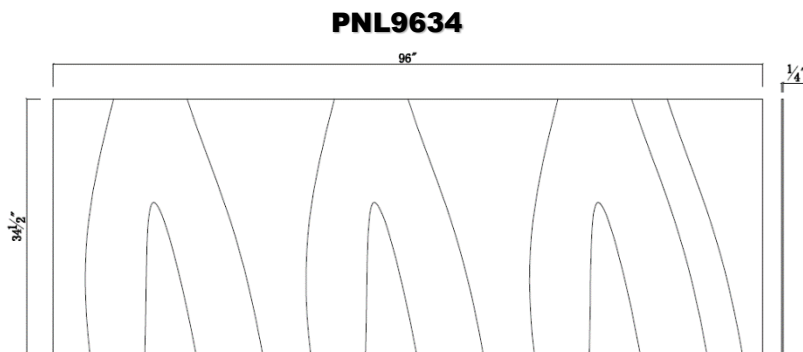


DETAILED DRAWINGS

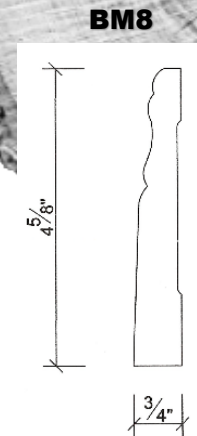
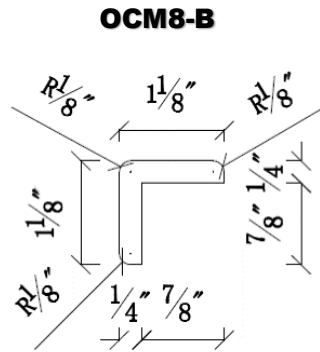
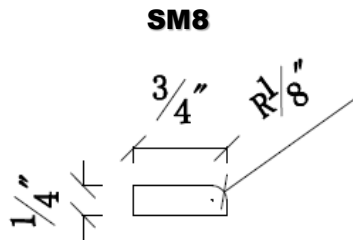
FILLERS & TOEKICK



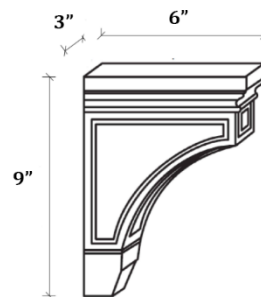
PANELS



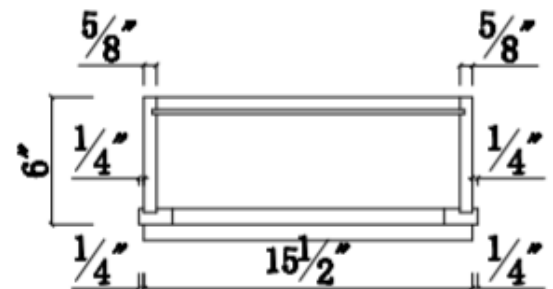
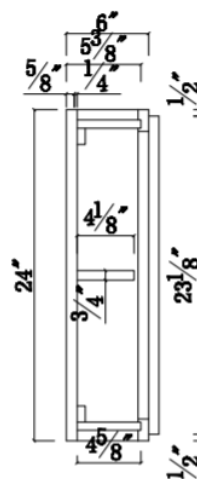
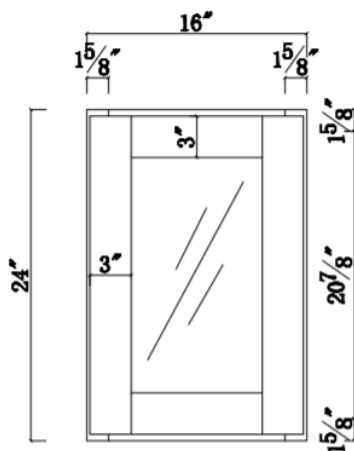
MOLDING



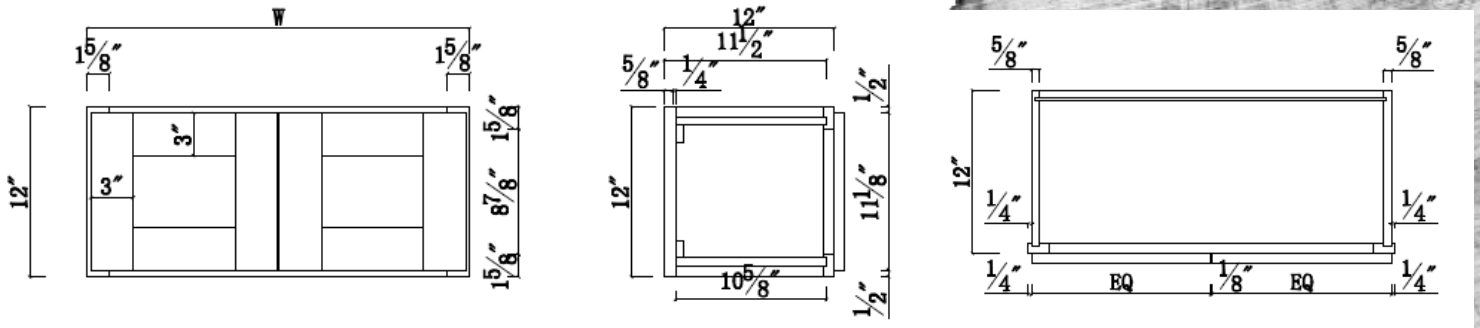
CORBELS



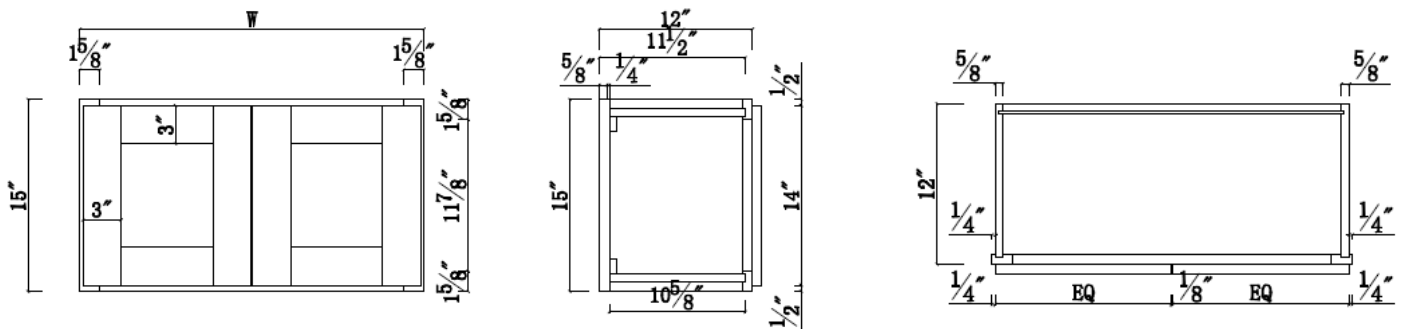
MEDICINE CABINET



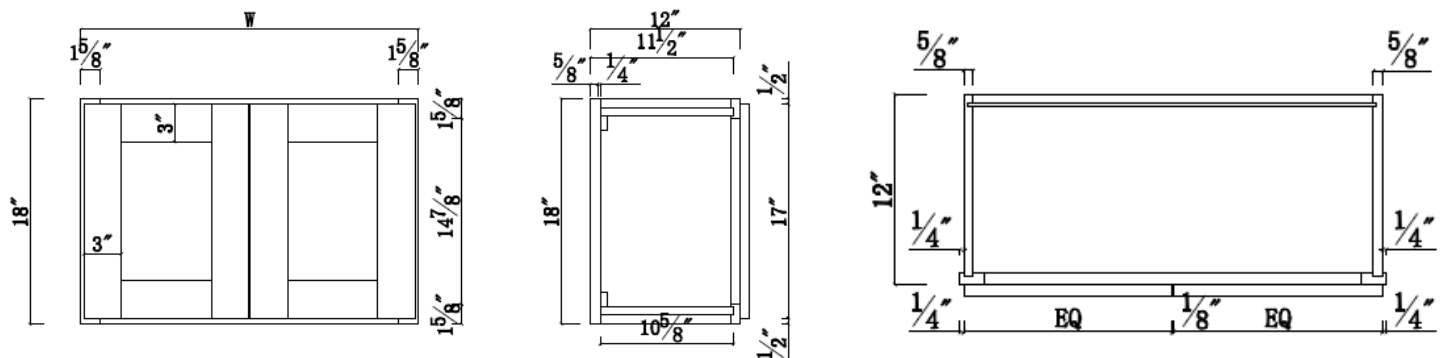
W3012 – W3312 – W3612



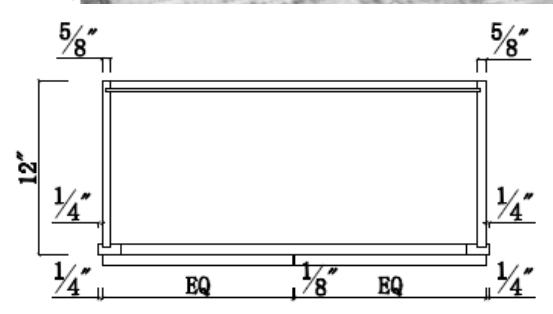
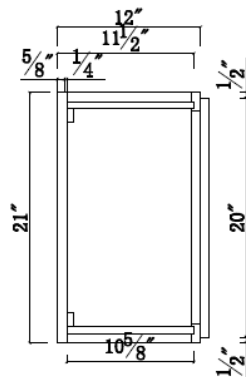
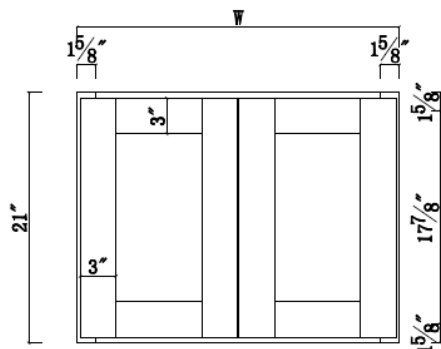
W3015 – W3315 – W3615 – W3915



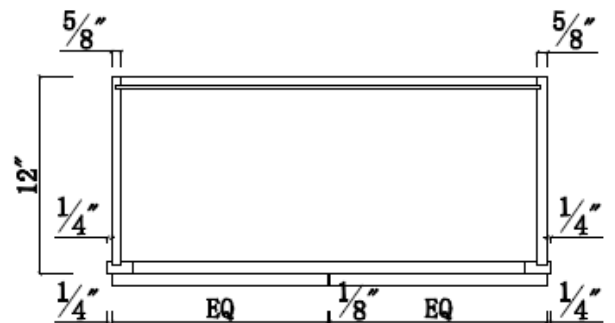
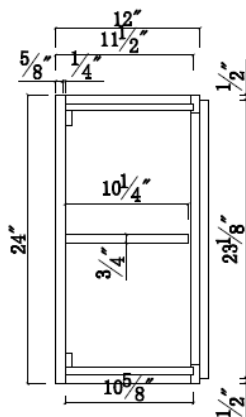
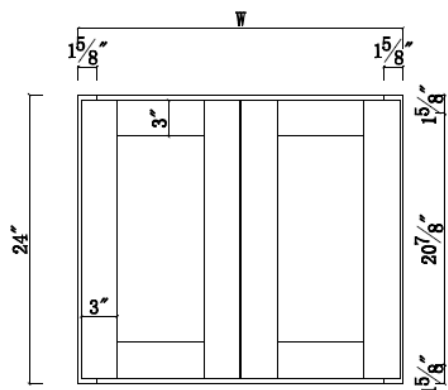
W3018 – W3318 – W3618 – W3918



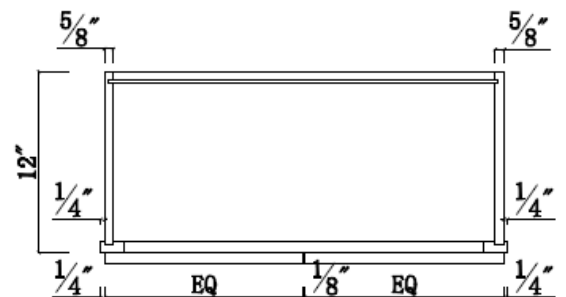
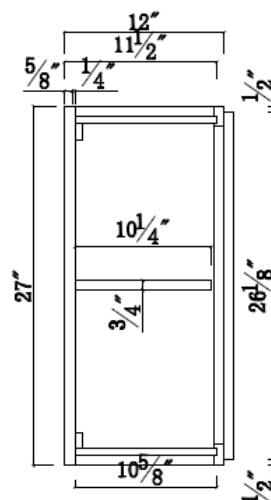
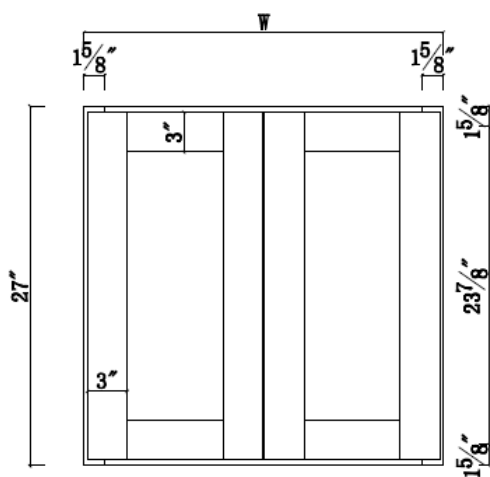
W3021 – W3321 – W3621 – W3921



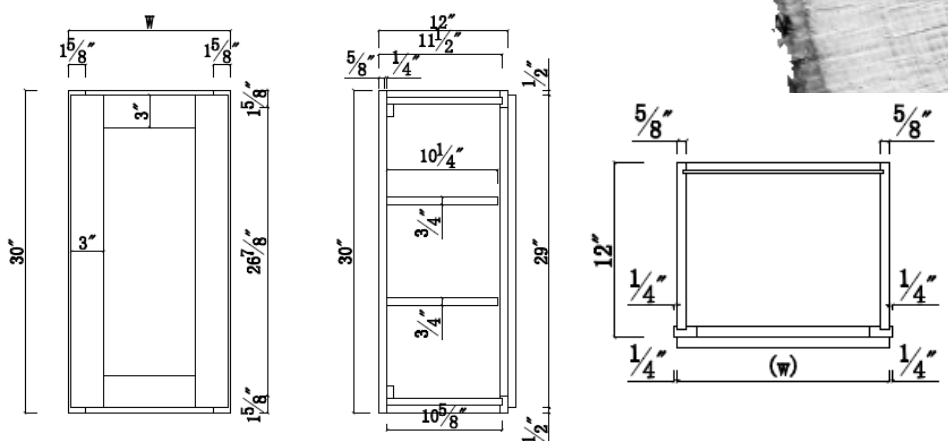
W3024 – W3324 – W3624 – W3924



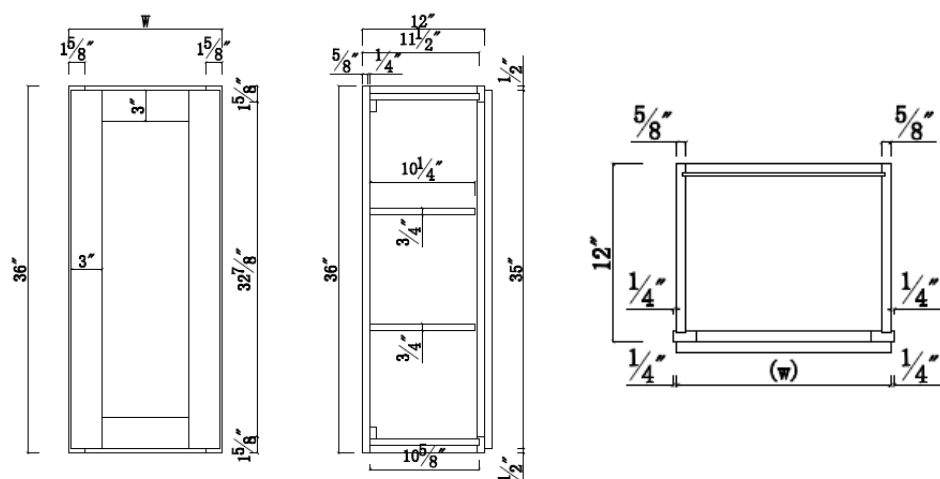
W3027 – W3327 – W3627 – W3927



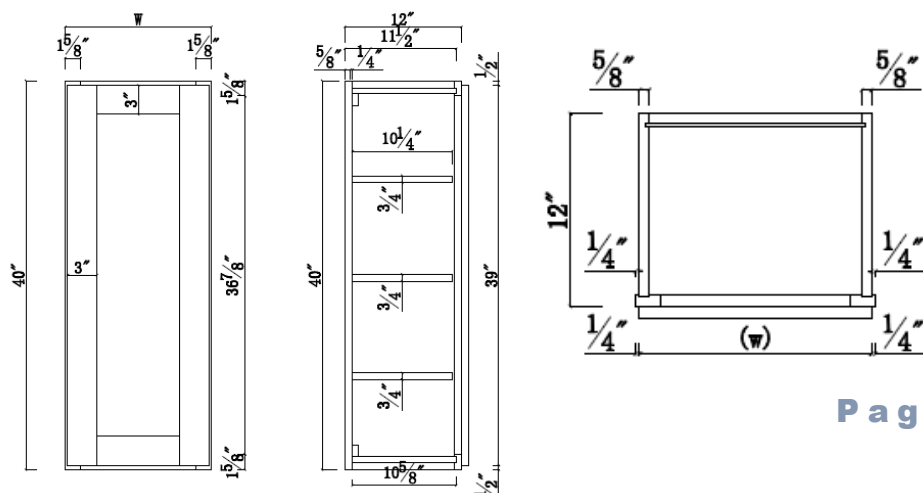
W0930 – W1230 – W1530 – W1830 – W2130



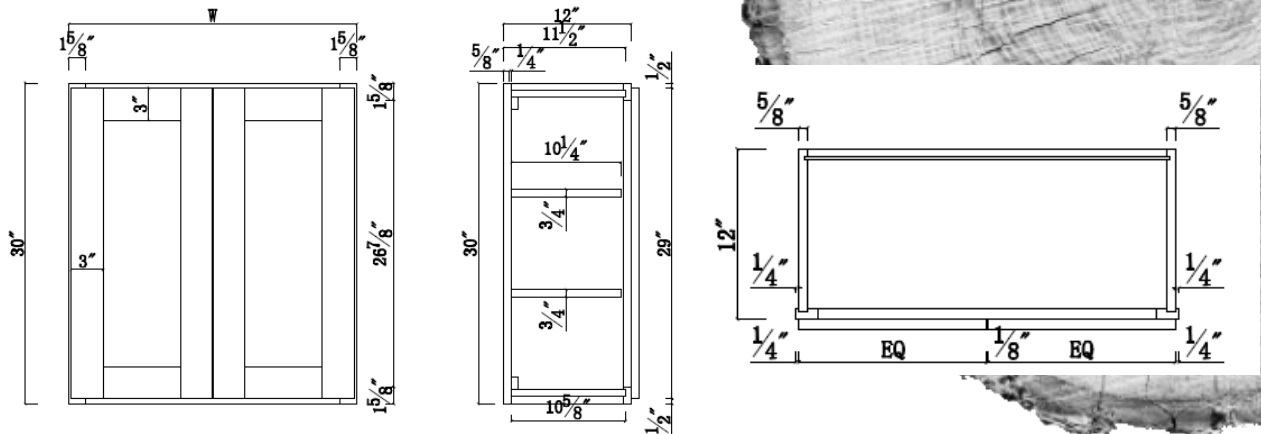
W0936 – W1236 – W1536 – W1836 – W2136



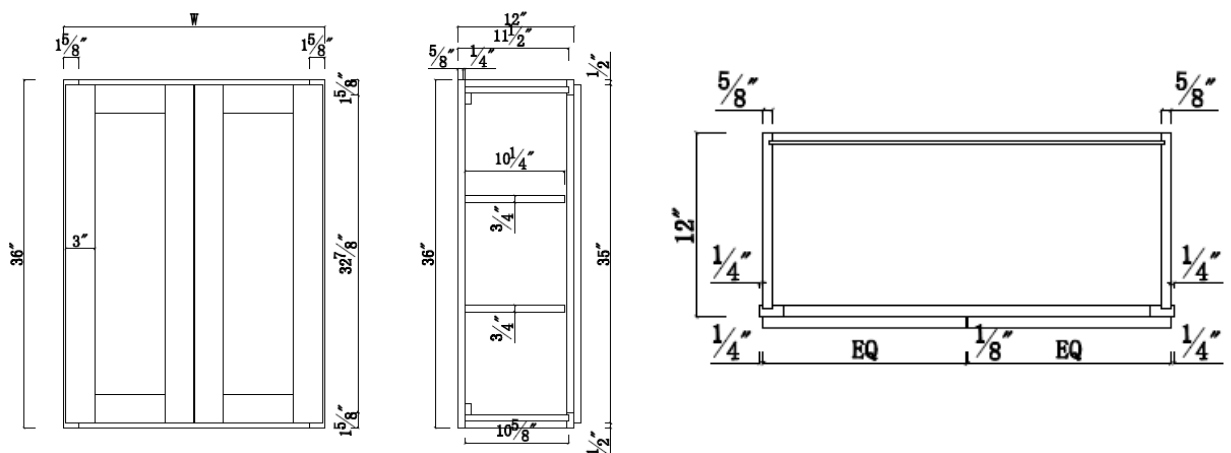
W0940 – W1240 – W1540 – W1840 – W2140



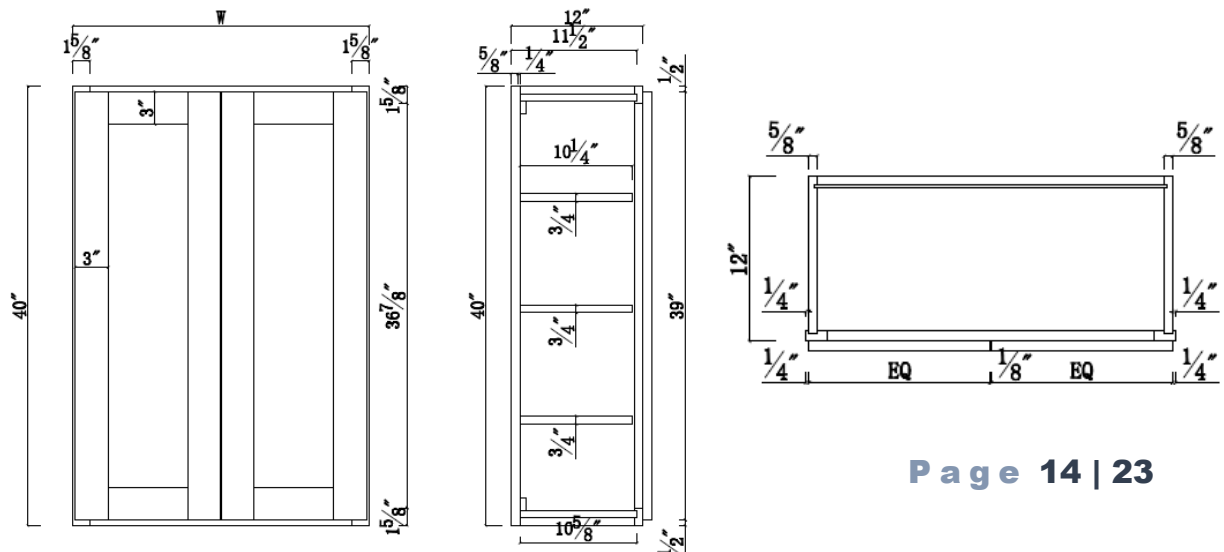
W2430 – W2730 – W3030 – W3330 – W3630 – W3930 – W4230



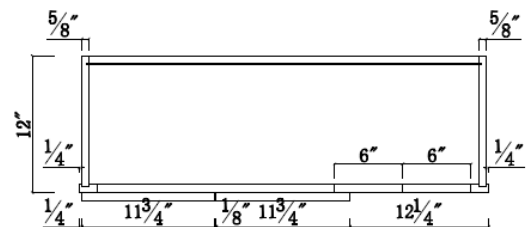
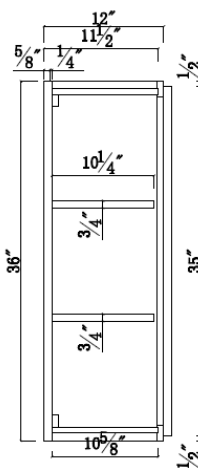
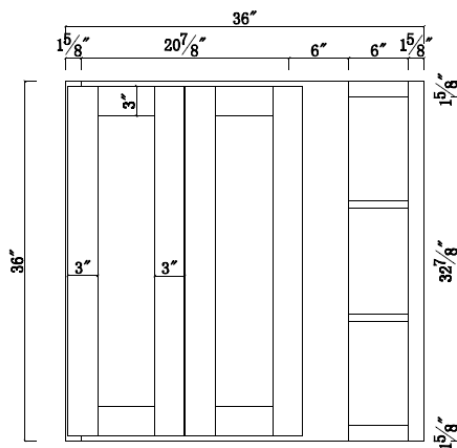
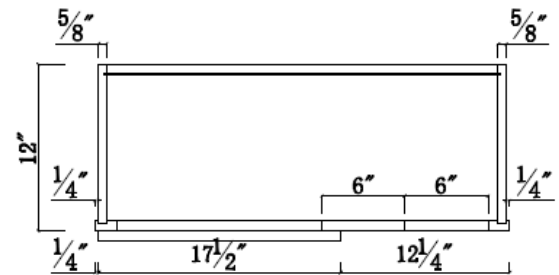
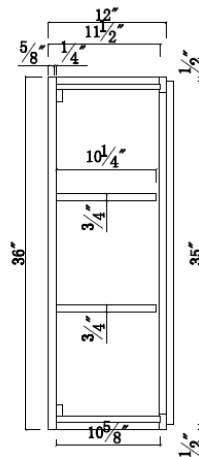
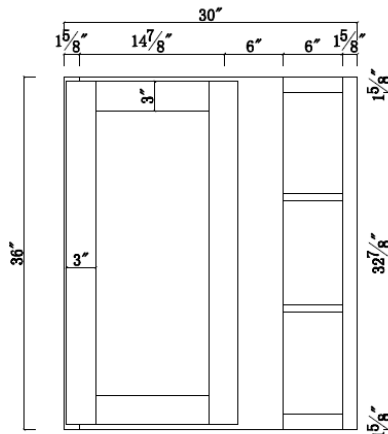
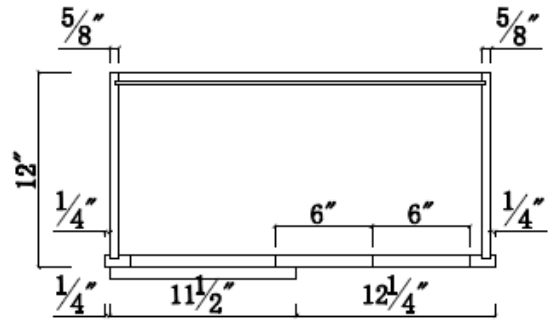
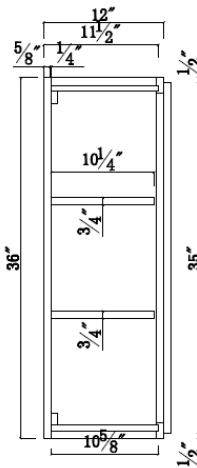
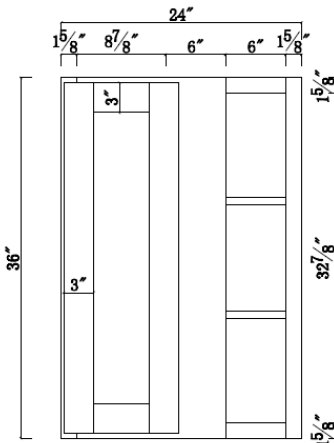
W2436 – W2736 – W3036 – W3336 – W3636 – W3936 – W4236



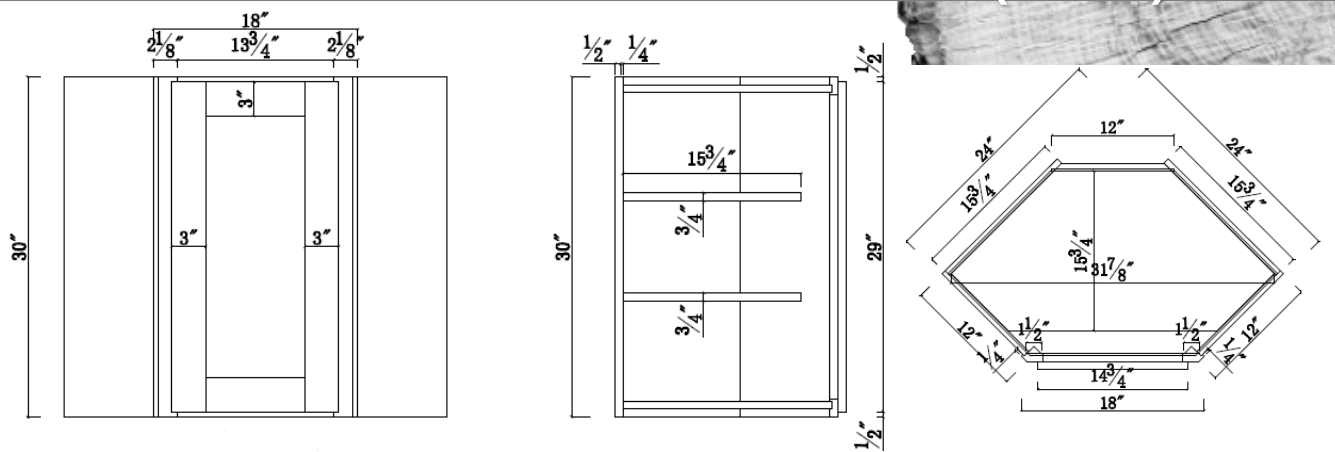
W2440 – W2740 – W3040 – W3340 – W3640 – W3940 – W4240



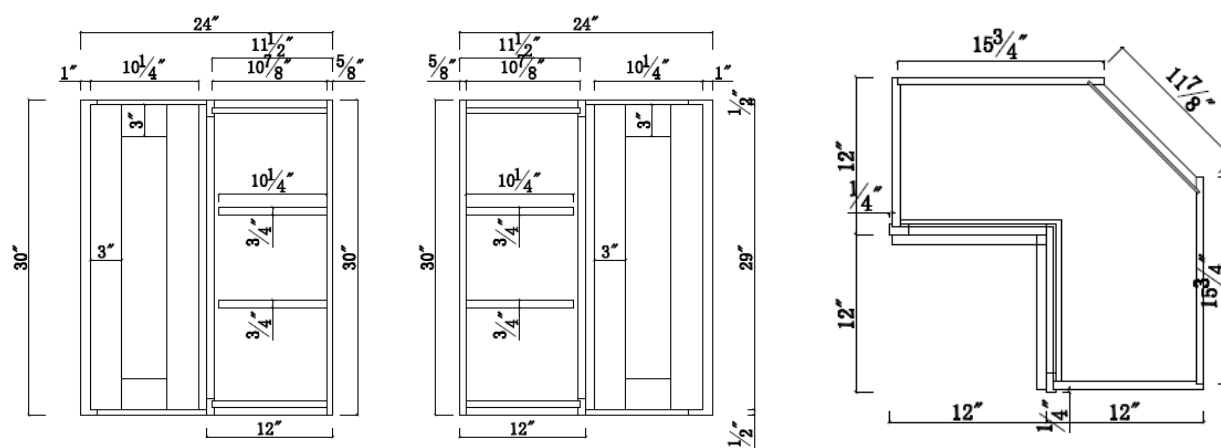
WBC24/27x36 – WBC30/33x36 – WBC36/39x36



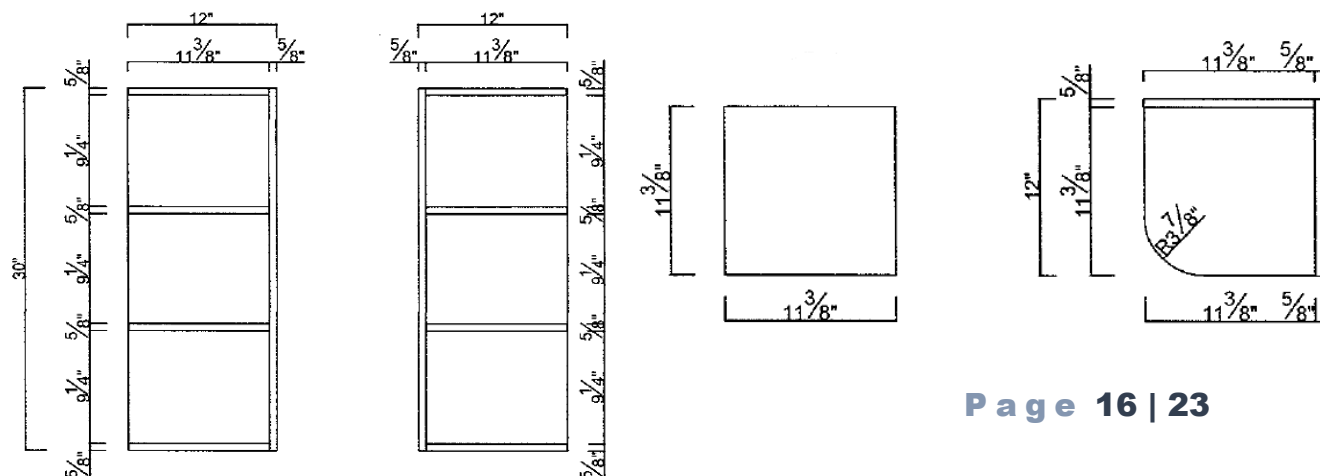
WALL DIAGONAL CABINET (WDC)



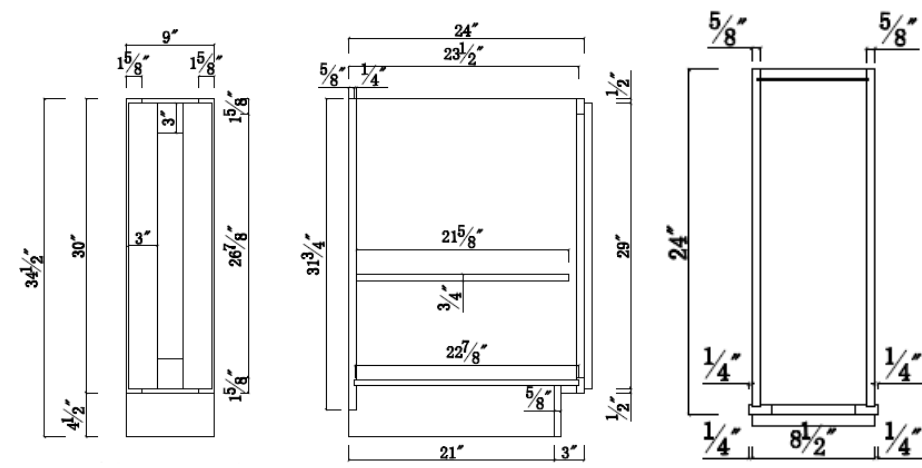
WALL EASY REACH CABINET (WER)



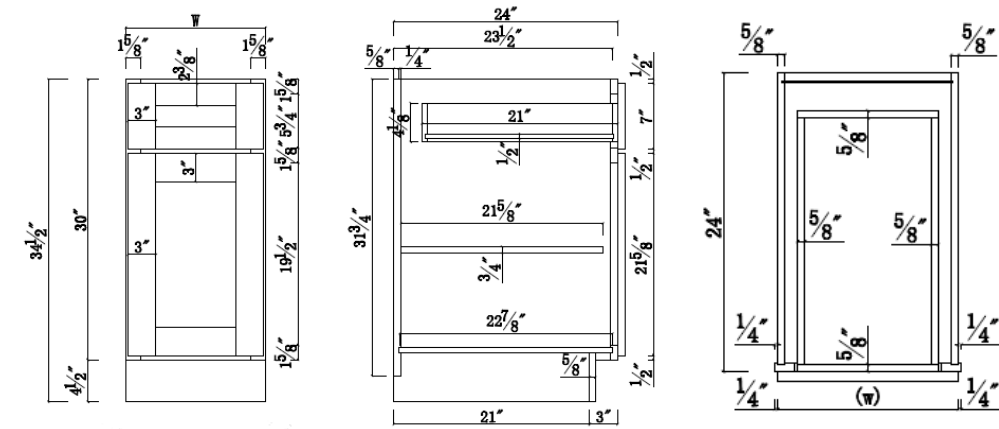
WALL END SHELF CABINET (WES)



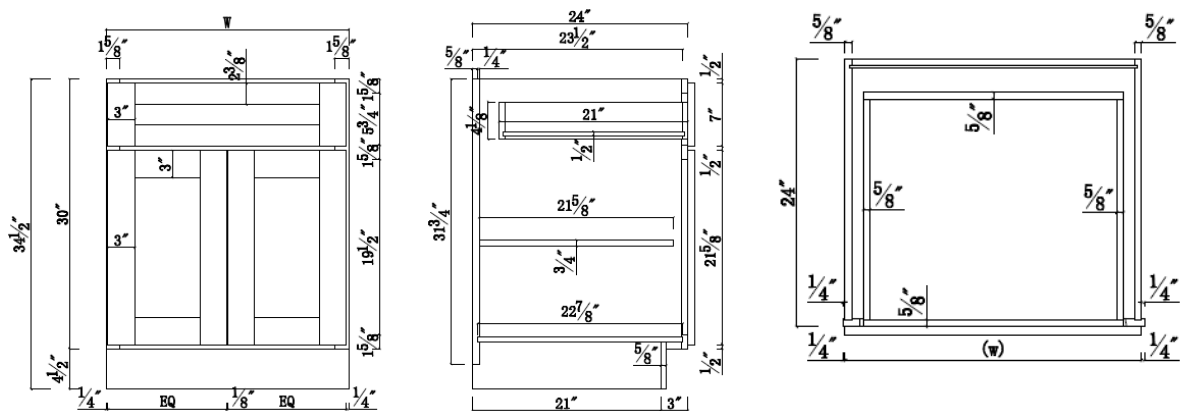
B09



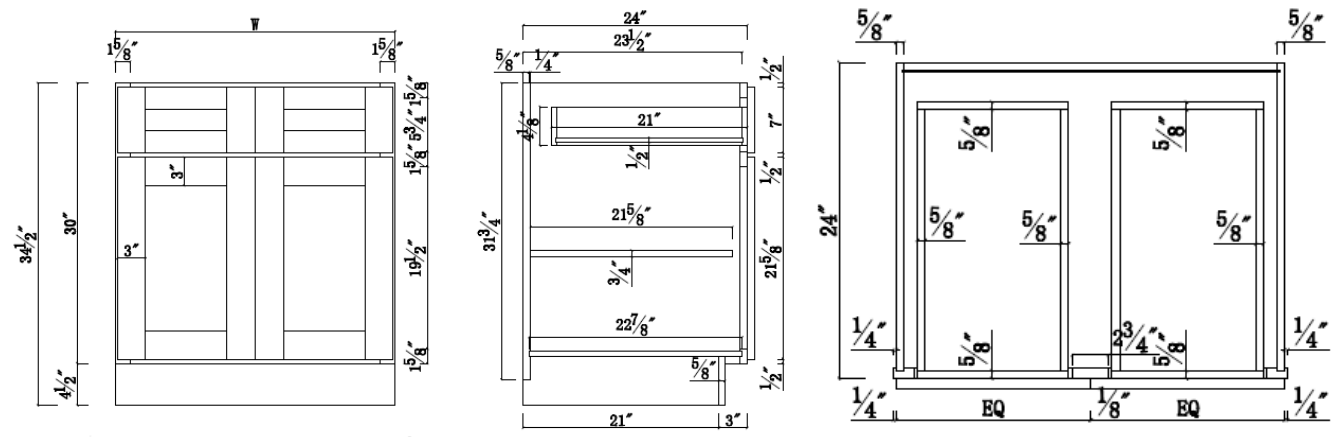
B12 – B15 – B18 – B21



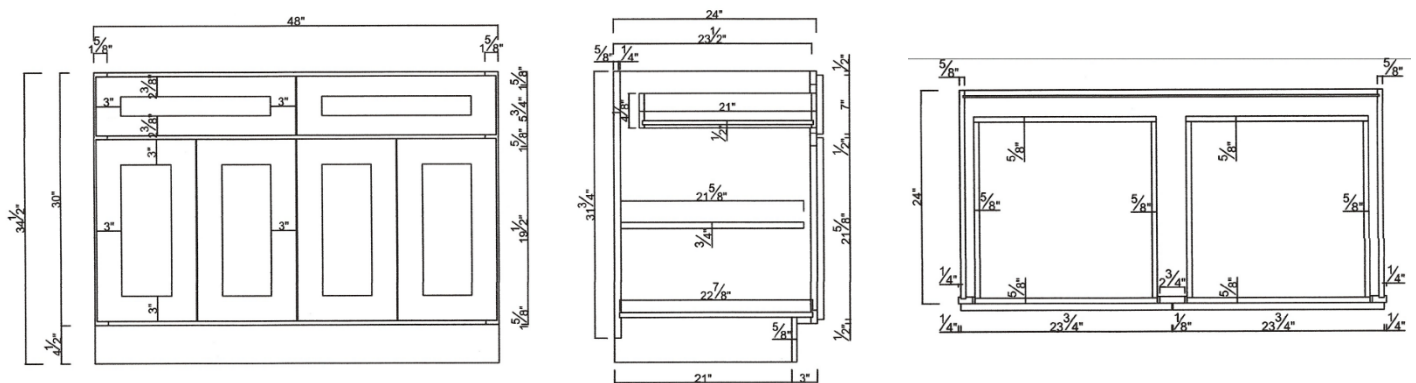
B24 – B27 – B30



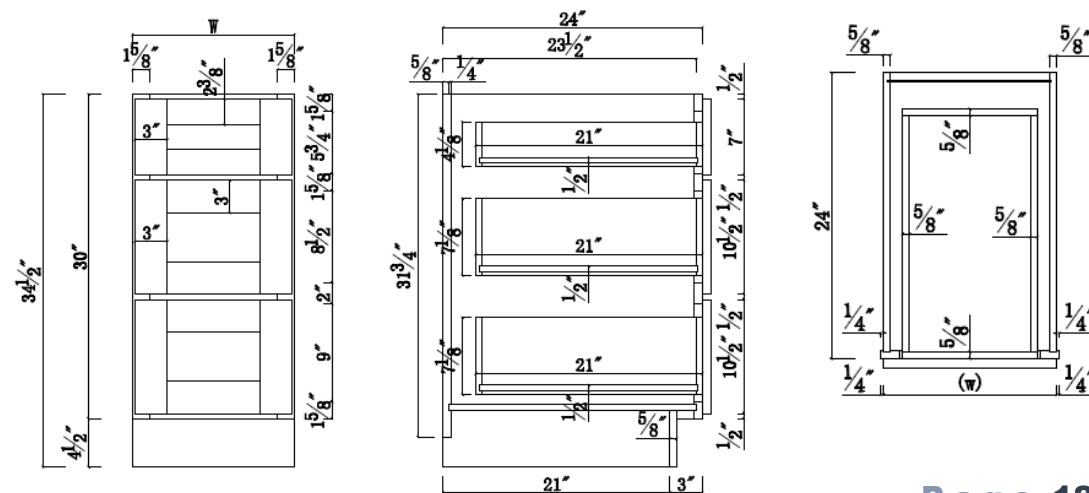
B33 – B36 – B39 – B42



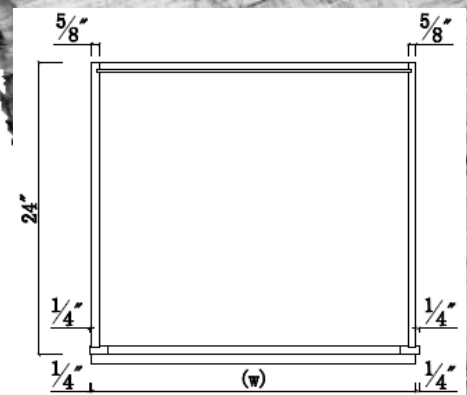
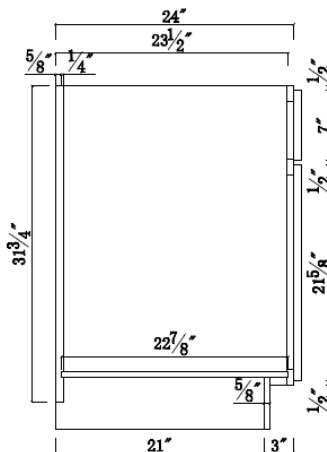
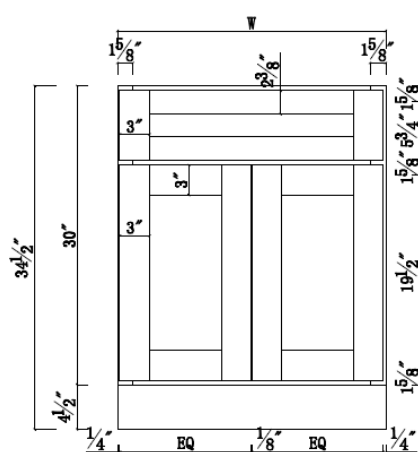
B48



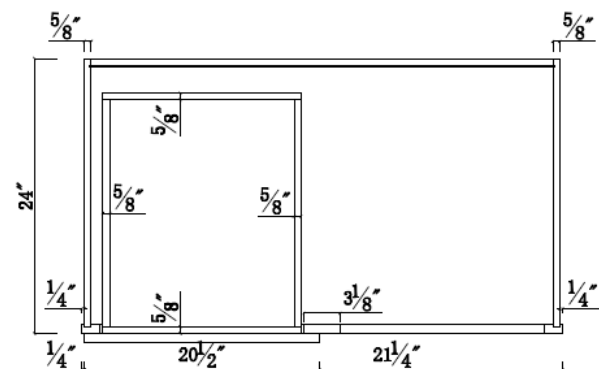
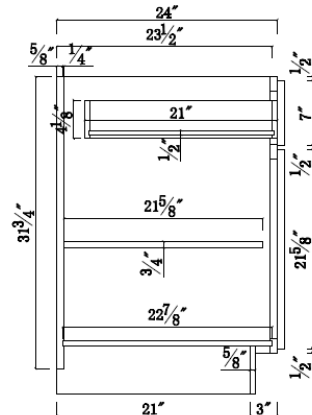
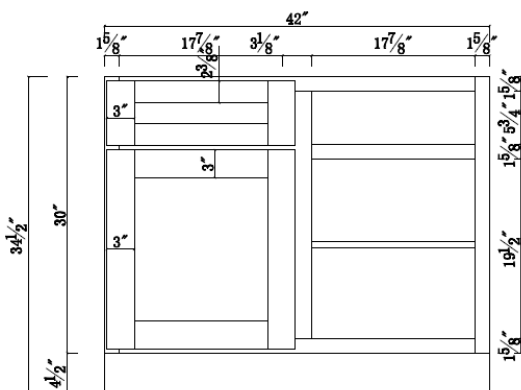
DB12 – DB15 – DB18 – DB21



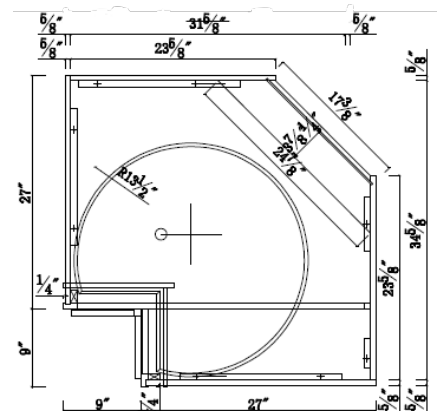
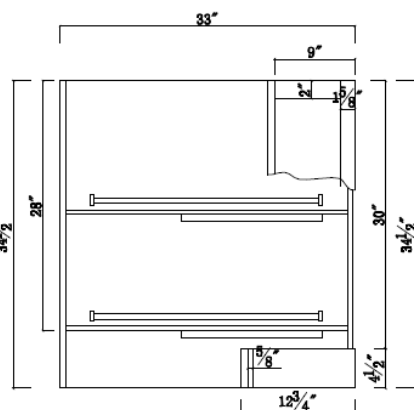
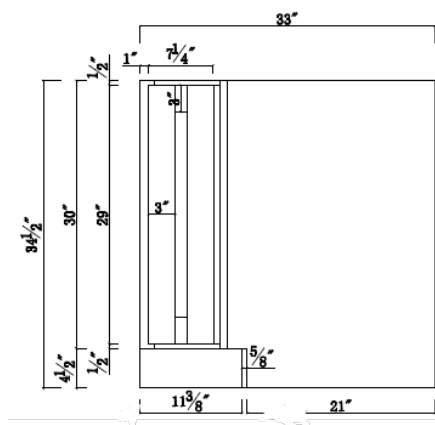
SB24 – SB27 – SB30 – SB33 – SB36 – SB39 – SB42



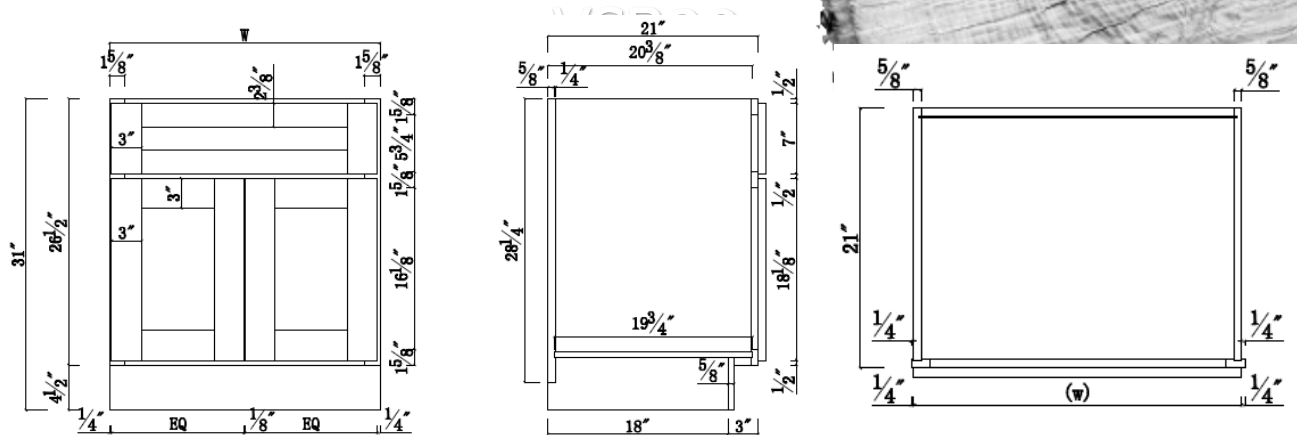
BLIND BASE CABINETS (BBC)



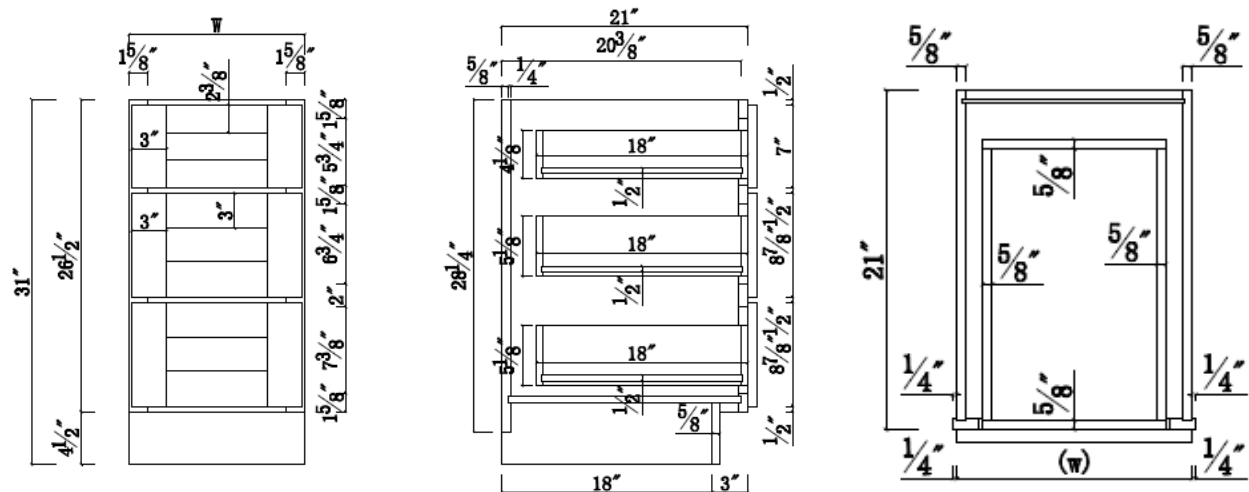
LAZY SUSAN CABINETS (DCB)



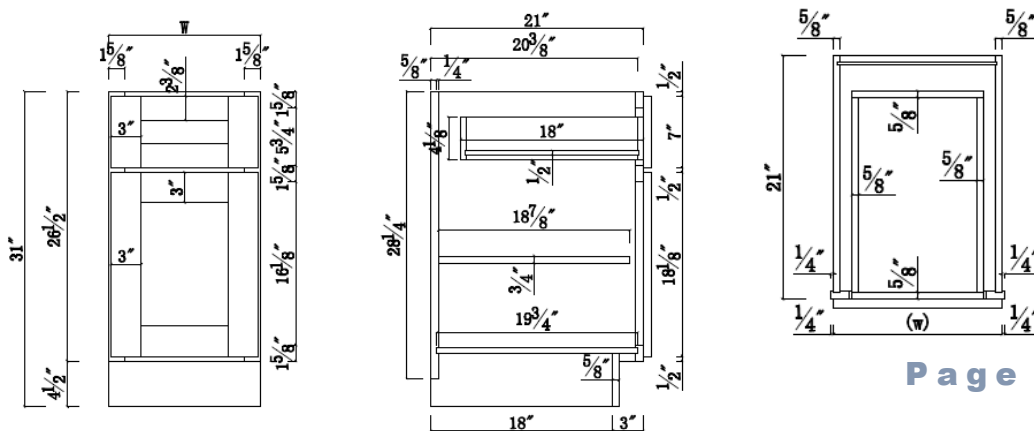
VSB24 – VSB27 – VSB30 – VSB33 – VSB36 –



VDB09 – VDB12 – VDB15 – VDB18 – VDB21



VB09 – VB12



Customer Name: _____

Ship To: _____

Date: _____

PO#: _____

☐ Pick Up / Will Call☐ Honey Pecan Shakers☐ Delivery☐ White Shakers

QTY	WALL CABINETS
	W3012
	W3312
	W3612
	W3015
	W3315
	W3615
	W3915
	W2418
	W2718
	W3018
	W3618
	W3918
	W2421
	W2721
	W3021
	W3621
	W2424
	W3024
	W3327
	W3627
	W2430
	W2730
	W3030
	W3330
	W3630
	W3930
	W4230
	W2436
	W2736
	W3036
	W3336

QTY	WALL CABINETS
	W3936
	W4236
	W2440
	W2740
	W3040
	W3340
	W3640
	W3940
	W4240
	W0930
	W1230
	W1530
	W2130
	W0936
	W1236
	W1536
	W1836
	W2136
	W0940
	W1240
	W1540
	W1840
	W2140

QTY	WALL DIAGONAL CORNER CABINETS
	WDC2430
	WDC2436
	WDC2440

QTY	WALL BLIND CONER CABINETS
	WBC24/27X30
	WBC24/24X36
	WBC24/27X40
	WBC30/33X30
	WBC30/33X36
	WBC30/33X40
	WBC36/39X30
	WBC36/39X36
	WBC36/39X40

QTY	WALL EASY REACH CABINETS
	WER2430
	WER2436
	WER2440

QTY	WALL END SHELF CABINETS
	WES1230
	WES1236

QTY	BASE CABINETS
	B09
	B12
	B15
	B18
	B21
	B24
	B27
	B30
	B33

QTY	BASE CABINETS
	B36
	B39
	B42
	B48

QTY	DRAWER BANK CABINETS
	DB12
	DB15
	DB18
	DB18-4 DRAWER
	DB21
	DB24
	DB27

QTY	SINK BASE CABINETS
	SB24
	SB27
	SB30
	SB33
	SB36
	SB36ACCESS
	SB39
	SB42

QTY	LAZY SUSAN CABINETS
	DCB33/09
	DCB36/12

QTY	BASE EASY REACH CABINETS
	ER33/09
	ER36/12

QTY	BLIND BASE CABINETS
	BBC36 (12" FULL HEIGHT DOOR)
	BBC36(15" DOOR)
	BBC42 (15" DOOR)
	BBC48 (18" DOOR)

QTY	TALL VANITY BASE CABINETS
	TVB09
	TVB15

QTY	TALL VANITY DRAWER BANK CABINETS
	TVDB09
	TVDB15
	TVDB18
	TVDB24

QTY	TALL VANITY SINK BASE CABINETS
	TVSB24
	TVSB27
	TVSB30
	TVSB33
	TVSB36

QTY	TALL VANITY SINK BASE SET CABINETS
	TVSB36SET
	TVSB42SET
	TVSB48SET

QTY	VANITY BASE CABINETS
	VB09
	VB12
	VB15
	VB18
	VB30

QTY	VANITY DRAWER BANK CABINETS
	VDB09
	VDB12
	VDB15
	VDB18
	VDB21
	VDB24

QTY	VANITY SINK BASE CABINETS
	VS21
	VS24
	VS27
	VS30
	VS33
	VS36
	VS39
	VS42
	VS48

QTY	VANITY SINK BASE SET CABINETS
	VS36SET
	VS42SET
	VS48SET

QTY	WALL PANTRY CABINETS
	WP1284
	WP1294
	WP1884
	WP1890
	WP1894
	WP241284
	WP2484
	WP2484 WATER HEATER

QTY	WALL PANTRY CABINETS
	WP2490
	WP2494
	WP3684
	WP3690
	WP3694

QTY	ACCESSORIES
	BF3
	BM8
	BP4896
	CORBELS
	DWR3
	FP4896X1/2
	MEDICINE CABINET
	OCM8
	OCM8B
	PNL9634X1/2
	REP96
	SHELVES 24X24
	SM8
	TF396
	TF696
	TKC
	WF196
	WF330
	WF336
	WF340
	WF630
	WF636
	WF640
	WF642